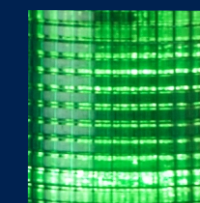
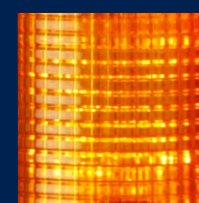




TARGET



Manufactured by :

TARGET ELECTRICALS

7A, Tawawalla Building, Lohar Chawl, Mumbai - 400 002. Tel.: 91-22-2200 5703. Fax.: 91-22-2205 6937.

Email: targetel@bom5.vsnl.net.in Website: targetel.com

All rights reserve to change in design, model, dimension and material are with manufacturer. Colours shown in the picture may not match with the actual colours.

Trusted Name in indication Industry



Electronic Hooter with Selectable Tone (72mm x 72mm)

Housing : Acrylonitrile Butadiene Styrene
Audible Range : 90 db Approx. (at 1 Meter)
Mounting : Flush/Base/Wall
Tone : Selectable 3 Tone
Input Voltage : 12V/24/30V/48/50V DC/110V/230V AC or DC

Description	Model No.
Flush Mounting	72-EHS
Base Mounting	72-EHS-B
Wall Mounting	72-EHS-W



Electronic Hooter with Variable Tone (96mmx96mm)

Housing : Acrylonitrile Butadiene Styrene
Audible Range : 100 db Approx. (at 1 Meter)
Mounting : Flush/Base/Wall
Tone : Black Cabinet- Intermittent / Red Cabinet- Siren
Input Voltage : 12V/24/30V/48/50V DC/110V/230V AC or DC

Tone : Intermittent

Description	Model No.
Flush Mounting	96-EHS
Base Mounting	96-EHS-B
Wall Mounting	96-EHS-W
Potential Free Contact	96-EHP
With 5mm LED	96-EHL
With Volume Control	96-EHV
With Volume & LED	96-EHVL
With Acceptance	96-EHA
With Volume & Acceptance	96-EHVA

Tone: Siren

Electronic Hooter	96-EHS-S3
Electronic Hooter with Volume Control	96-EHV-S3

Tone: Musical

Electronic Hooter	96-EHM
Electronic Hooter with Volume Control	96-EHMV

Universal Input Voltage

Electronic Hooter	24V to 250V AC/DC	96-EHU
-------------------	-------------------	--------

Volume control & Acceptance version available on request



Electronic Hooter- Variable Tone 144mm x 144mm

Housing : M.S. with Powder Coating
Audible Range : 107 db Approx.(at 1 meter)
Mounting : Base
Tone : Intermittent/Siren
Input Voltage : 12V/24/30V/48/50V DC/110V/230V AC or DC

Sound : Intermittent

Description	Model No.
Electronic Hooter with 10mm LED	144-EHL
Potential Free Contact	144-EHP

Sound : Siren

Electronic Hooter with 10mm LED	144-EHL-S3
---------------------------------	------------



Industrial Gong Bell

Housing : Cast Aluminium
Gong Size : 4"/6"/9"/12"
Gong : M. S. with Powder Coating
Input Voltage : 230V AC

Gong Size	Model No.
4"	4-HGB
6"	6-HGB
9"	9-HGB
12"	12-HGB



Industrial Round Hooter AC Supply


Housing : Cast Aluminium
Cover : Plastic
Size : 4" (Base Mounting 95mm approx.)
Input Voltage : 110V/230V AC

Description	Model No.
Mini Base Mounting	4-RBM

Standard Voltage	12	24	48	110	230	415
For AC	A 1	A 2	A 3	A 4	A 5	A 6
For DC	D 1	D 2	D 3	D 4	D 5	-

Add Suffix to above model

Electronic Siren with Revolving Light

Housing : M. S. with Powder Coating
Audible Range : 0.5km
Mounting : Base
Tone : Siren
Housing : Acrylonitrile Butadiene Styrene
Glass : Polycarbonate
Glass Colour : 
Revolving : LED Version
Input Voltage : 12V /24/30V/48/50V DC/110V/230V AC

*Please Confirm availability of Glass Colour

Description	Model No.
0.50km	ESTV-50-LR



Electrical Square Buzzer


Housing : Cast Aluminium
Cover : Plastic
Size : Base Mounting (52mm x 52mm approx.)
Input Voltage : 110V/230V AC

Model No.
2-MB





Electronic Hooter with Revolving Light

Housing : Acrylonitrile Butadiene Styrene
Audible Range : 100 db Approx.(at 1 meter)
Mounting : Base/Wall
Tone : Black Cabinet-Intermittent / Red Cabinet- Siren
Glass : Polycarbonate
Glass Colour : 
Revolving : LED Version
Input Voltage : 12V/24V DC/30V/48/50V DC/110V/230V AC or DC


Hooter Size:96mm x 96mm

Flasher Type	Tone	Cabinet Colour	Model No.
LED	Intermittent	Black	96-EHS-LR
LED	Siren	Red	96-EHS-S3-LR

**Please Confirm availability of Glass Colour*




Electronic Hooter with Flasher

Housing : Acrylonitrile Butadiene Styrene
Audible Range : 100 db Approx.(at 1 meter)
Mounting : Base/Wall
Tone : Black Cabinet-Intermittent /Red Cabinet -Siren
Glass : Styrene Acrylonitrile
Glass Colour : 
Flasher : LED Version
Input Voltage : 12V/24/30V/48/50V DC/110V/230V AC or DC

Hooter Size:96mm x 96mm

Flasher Type	Cabinet	Model No.
LED	Black	96-EHS-CFLL
LED	Red	96-EHS-S3-CFLL



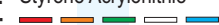
Housing : M. S. with Powder Coating
Audible Range : 107 db Approx.(at 1 meter)
Mounting : Base/Wall
Tone : Intermittent/Siren
Glass : Polycarbonate
Glass Colour : 
Revolving : LED Version
Input Voltage : 12V/24V/30V/48/50V/110V/230V AC or DC

Hooter Size:144mm x 144mm

Flasher Type	Tone	Cabinet Colour	Model No.
LED	Intermittent	Black	144-EHS-LR
LED	Siren	Black	144-EHS-S3-LR

**Please Confirm availability of Glass Colour*



Housing : M. S. with Powder Coating
Audible Range : 107 db Approx.(at 1 meter)
Mounting : Base/Wall
Tone : Intermittent/Siren
Glass : Styrene Acrylonitrile
Glass Colour : 
Flasher : LED Version
Input Voltage : 12V/24/30V/48/50V DC/110V/230V AC or DC

Hooter Size:144mm x 144mm

Flasher Type	Model No.
LED	144-EHS-CFLL
LED	144-EHS-S3 CFLL



Electronic Circuit with Detachable Speaker

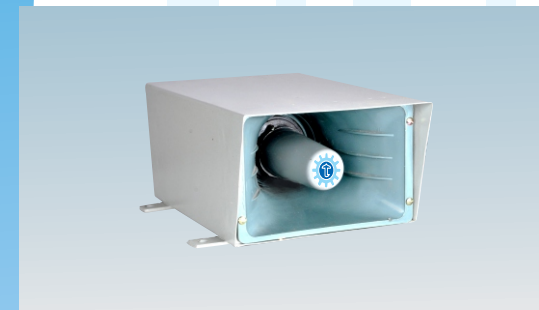
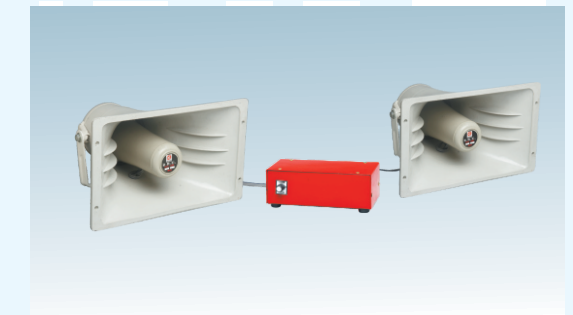
Housing : Acrylonitrile Butadiene Styrene
Cabinet Size : 113mm x 113mm
Tone : Black Cabinet- Intermittent / Red Cabinet-Siren
Speaker : P.A or Target
Input Voltage : 12V/24/30V/48/50V DC/110V/230V AC or DC

Description	Model No.
113mm x 113mm	DEH
96mm Speaker	Economy

Detached Siren

Housing : M. S. with Powder Coating
Cabinet Size : 225mm x 200mm
Tone : Siren
Speaker : P.A.
Audible Range : 0.5km,1km
Input Voltage : 12V/24V DC/110V/230V AC

Description	Model No.
0.50km	ESTVD-50
1.00km	ESTVD-100



Electronic Hooter/Siren (Hivol)

Housing : M. S. with Powder Coating
Cabinet Size : 213mm X 137mm
Tone : Intermittent / siren
Audible Range : 113db approx.(at 1 meter)
Input Voltage : 12V/24V/48V DC/110V/220V AC

Description	Tone	Model No.
213mm x 137mm	Intermittent	HVH
213mm x 137mm	Siren	HVS



Electronic Siren

Housing : M. S. with Powder Coating
Tone : Intermittent / Siren
Audible Range : 0.5 km
Mounting : Base
Input Voltage : 12V/24V DC/110V/230V AC

Description	Model No.
0.50 km	ESTV-50



Tower Light (LED) Steady + Flasher + Buzzer

Housing : Acrylonitrile Butadiene Styrene
Glass : Styrene Acrylonitrile
Glass Colour : ■ ■ ■ ■ ■
Audible Range : 70 db approx.(at 1 feet)
Input Voltage : 12V/24V DC/110/230V AC

Steady		Steady+Buzzer	
Stack	Model No.	Stack	Model No.
1	1-LTSS	1	1-LTSSB
2	2-LTSS	2	2-LTSSB
3	3-LTSS	3	3-LTSSB
4	4-LTSS	4	4-LTSSB
5	5-LTSS	5	5-LTSSB

Steady+Flasher		Steady+Flasher+Buzzer	
Stack	Model No.	Stack	Model No.
1	1-LTS	1	1-LTSB
2	2-LTS	2	2-LTSB
3	3-LTS	3	3-LTSB
4	4-LTS	4	4-LTSB
5	5-LTS	5	5-LTSB



Busbar Indication

Housing : M. S. with Powder Coating
Flaser Housing : Acrylonitrile Butadiene Styrene
Glass : Styrene Acrylonitrile
Glass Colour : Red,Amber,Blue
Input Voltage : 230VAC

Description	Model No.
Busbar Indication	BI

Revolving Light with or without Buzzer (LED)

Housing : Acrylonitrile Butadiene Styrene
Glass : Polycarbonate
Glass Colour : ■ ■ ■ ■ ■
Audible Range : 70 db approx.(at 1 feet)
Input Voltage : 12V/ 24V DC/110V/230V AC

Revolving	Model No.
LED Type	LR
LED Type with Buzzer	LRB

**Please Confirm availability of Glass Colour*

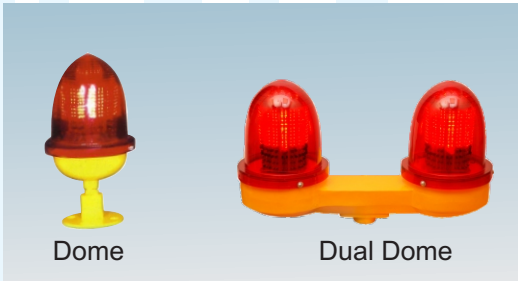


Aviation Light /Obstruction Light (Dome)

Housing : Pressure Cast
Glass : Polycarbonate

- * LED based obstruction lights utilize 90% less power than an equivalent incandescent
- * Typical power consumption-@230VAC-15W.
- * Weather/Corrosion resistant lamp assembly and housing.
- * Self contained wiring compartment eliminate additional boxes
- * Can be used as steady or flashing lights.
- * Nos. of LEDs used-306 nos.
- * Available in 12-24V DC, 110V AC and 230V AC (50/60/HZ) versions
- * Automatic on & off using Photo switch version available.

Description	Model No.
Dome Light	Dome
Dome Light with Photo Sensor	Dome PS
Dual Dome	Dual Dome
Dual Dome with Photo Sensor	Dual Dome PS



Dome Dual Dome



22.5mm Ø Indicating Lamp with or without Buzzer

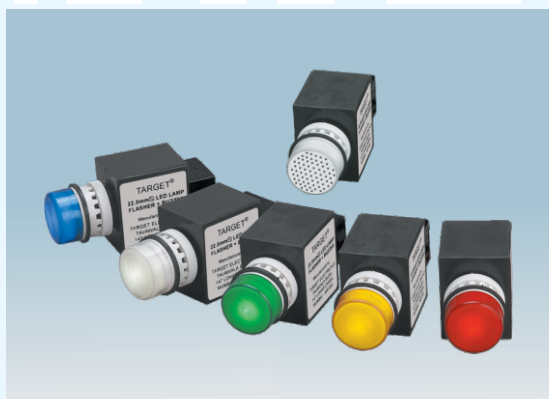
Housing : Acrylonitrile Butadiene Styrene
Glass : Styrene Acrylonitrile
Glass Colour : ■ ■ ■ ■ ■
Audible Range : 70 db approx.(at 1feet)
Input Voltage : 12V/ 24V DC/110/230V AC or DC

Description	Model No.
Buzzer	RB
Steady Lamp	SR
Flasher Lamp	FR
Steady Lamp + Buzzer	SRB
Flasher Lamp + Buzzer	FRB

LED Flasher with or without Buzzer

Housing : Acrylonitrile Butadiene Styrene
Glass : Styrene Acrylonitrile
Glass Colour : ■ ■ ■ ■ ■
Audible Range : 70 db approx.(at 1 feet)
Input Voltage : 12V/ 24V/48V DC/110V/230V AC

Flasher	Model No.
LED	CFLL
LED with Buzzer	CFLLB



Electronic Hooter with Tower Light

Housing : Acrylonitrile Butadiene Styrene
Base Patty : M.S. Powder Coating
Audible Range : 100 db Approx. (at 1 Meter)
Mounting : Base/Wall
Tone : Black Cabinet- Intermittent / Red Cabinet- Siren
Glass : Styrene Acrylonitrile
Glass Colour : ■ ■ ■ ■ ■
Input Voltage : 12V /24V DC/110V/230V AC

Hooter Size: 96mm x 96mm

Model No.
96-EHS-1-LTS
96-EHS-2-LTS
96-EHS-3-LTS

Please Specify Hooter Sound with Flasher or Steady

Compact

Housing : Base & Top Powder coated Aluminum Casting
Glass : Polycarbonate
Input : 85V to 250V ACDC/ 24V to 80V ACDC/12V DC
Version : LED with Photo Sensor

Description	Model No.
Light with photo sensor	AL

